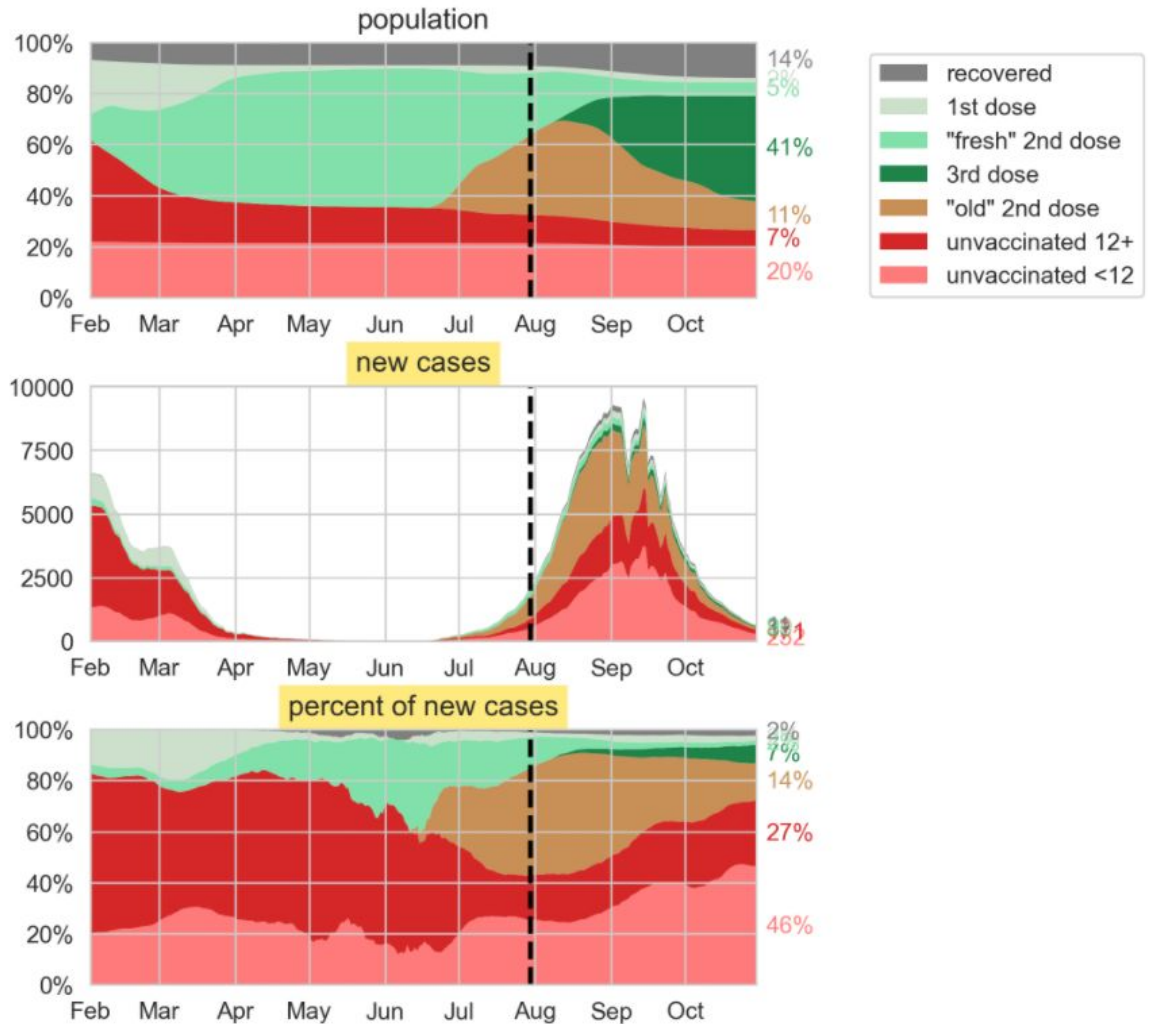


In Jul-Aug, the rapid increase in infections was mostly ($\approx 60\%$) of people half a year after 2nd dose.

In Sep-Oct, following the 3rd dose, infections decrease and are mostly of the unvaccinated.



In July, with delta and waning, large fraction ($\approx 60\%$) of severe cases was people over half a year after 2nd dose.

In Sep-Oct, following the 3rd dose, mostly unvaccinated become severe cases.

